

AMPT-2L-E-FB

Digitally controlled remote strain gauge amplifier (XN4-E)
Full bridge version

SN: X#####

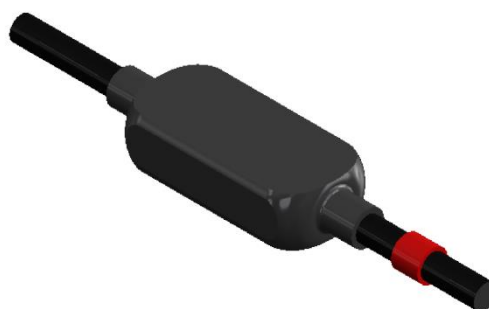
Texense sensors are designed for data logging. Should the users want to include this sensor in a closed loop system, they must undertake total responsibility from doing so.

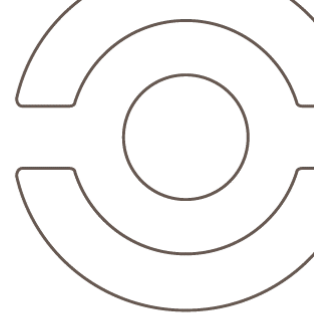
Measurement features		
Bridge gauge impedance	120 to 1000	Ω
Max recommended unbalance	120Ω gauge	1.5
	350Ω gauge	2
	1000Ω gauge	3.5
Offset drift with temperature	<10	mV
Gain drift with temperature	<0.2	%
Bridge supply voltage	5	V
Analog output		
Output signal	0 to 5	V
Filter	1 pole filter	
Cut-off frequency at -3dB	Default	9000
	On request	40 to 9000
		Hz
Digital communication		
The digital wire Tx/Rx enables to set the following parameters		
Offset	0 to 5	V
Gain	70 to 1250	-
Gain compensation	-2000 to 2000	ppm/°C
Electrical features		
Supply voltage	8 to 30	V
Supply current under 12V (amplifier alone)	3.5	mA
Mechanical features		
Dimensions	37 x 13.5 x 8.2	mm
Material	Aluminum	
Weight (without cable)	15	g
Environment		
Accuracy temperature	-20 to +125	°C
Operating temperature	-40 to +125	°C
Storage temperature	-40 to +125	°C
Protection	IP64	
Vibration test	20 Gpp 5'	
Shock	500	G

Date		Operator	
Customer			
Order			
Product Ref	AMPT-2L-E-FB-##		
SW version	V1.04		

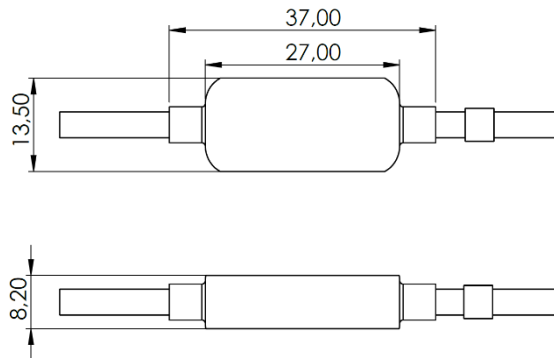
Readings (on a dummy gauge bridge)	
V at 0mV input	V at 10mV input
...V	...V

Software setup		
Offset	2.5	V
Gain	200	V/V-
Gain compensation	-340	ppm/°C





Mechanical drawing

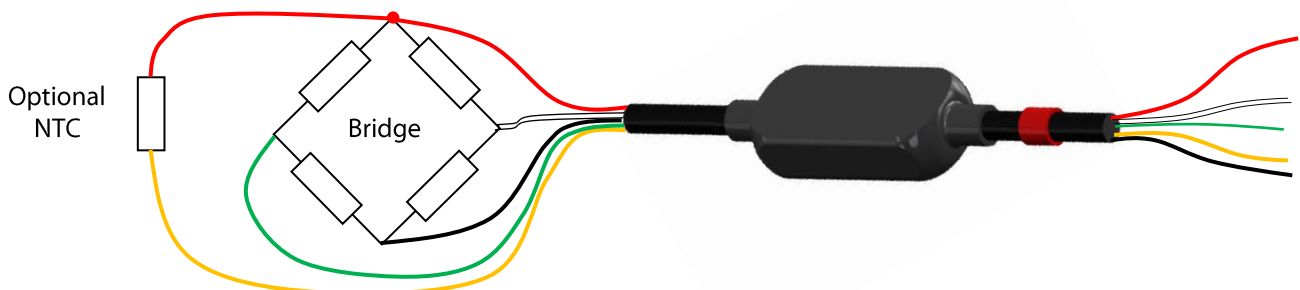


Wiring

Cable to gauge		
5x26 AWG FEP tinned copper braided cable 250V 200°C		
Length: 1000mm Tubing: 50mm		
Connector: on request		
Color	Function	Pin
Red	Excitation +	
Black	Excitation -	
White	Signal -	
Green	Signal +	
Yellow	NTC ⁽²⁾	
Braid	Not connected	

(2) with external NTC (optional)

Cable to logger (with red label)		
5x26 AWG FEP tinned copper braided cable 250V 200°C		
Length: 1000mm Tubing: 50mm		
Connector: on request		
Color	Function	Pin
Red	Supply input	
Black	0V	
White	Signal	
Green	Do not connect and isolate	
Yellow	Tx/Rx	
Braid	Not connected	



See XN4 specification and operating manual for more information

Ordering information

Ordering ref:	
AMPT-2L-E – <u>Bridge</u> – <u>Cut-off frequency at -3dB</u>	
<u>FB: Full Bridge</u>	40: 40Hz 90: 90Hz 190: 190Hz 9000: 9kHz (default) Other on request
ex: AMPT-2L-E-FB-9000	