

Automotive Pressure & Temperature Transmitter VS50



Measures and transmits tyre pressure and temperature, providing continuous monitoring of tyres during test, development and race conditions. Operates with TMS AS Receiver. Installs in a standard 11.3mm valve hole compliant with ETRTO standards (typical production car rim) Transmitted data is encrypted and carries a unique serial number ensuring reliable error free data transmission. Each sensor is individually calibrated to a traceable standard, resulting in high accuracy across the operating temperature range (-20 to +125°C).

Pressure measuring range	0..3.5bar (0..50psi)
Measuring resolution	18mbar (0.25psi)
Pressure accuracy	+/- 1%
Temperature measuring range	-20..125°C (-4..257°F)
Resolution	1°C
Housing	Moulded plastic
Weight	23g (39g with valve stem)
Transmit rate	Adaptive (see text) up to 1Hz
Battery	Lithium Thionyl cell
Battery Life	>1,500,000 Transmissions
Radio Frequency	433.92MHz
RF Emission category	MPT1340, ETS 300-220
Typical TX range	20m (free space)

Operating modes

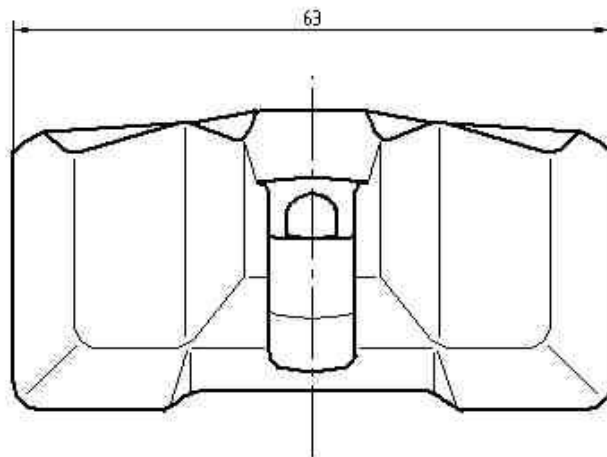
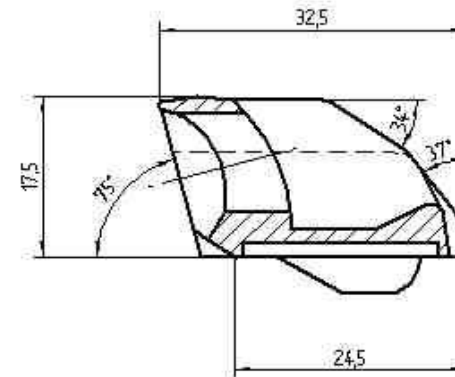
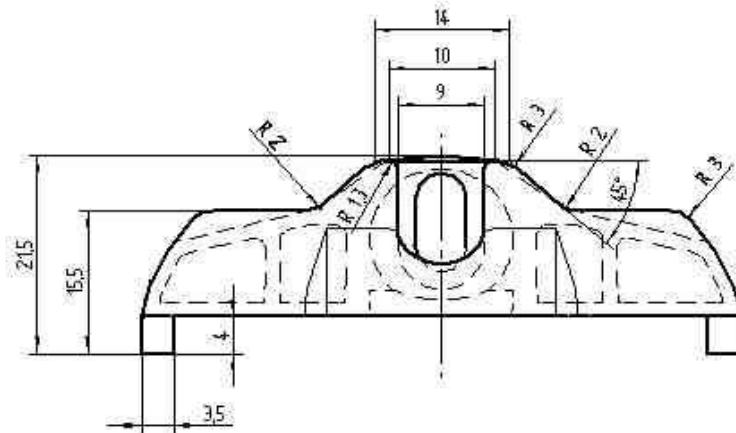
- Active mode - When pressure is above 0.17bar (2.5psi) and temperature is above active threshold (typically 40°C). Transmit interval 1sec. (2 sec option)
- Power save mode - When pressure is above 0.17bar (2.5psi) and temperature is below active threshold. Transmit interval 60sec (120sec optional). If pressure change 25mbar additional transmissions made.
- Sleep Mode - If pressure is below 0.17bar (2.5psi) the sensor makes no transmissions.
- Expected battery life:>1,500,000 transmissions (approx. 750hrs active, 9,000hrs power save, 15,000hrs sleep mode). Battery replacement can be carried out by factory or authorised service agent

Ordering Information:	Order Code	Description
	301200301	TMS Valve sensor VS50
	301210102	Battery & Antenna change

Request further information: Installation drawing VS50
 ETRTO valve hole standard drawing
 TMS AS Receiver data sheet

Toleranzabweichungen für Maßstäbe eines Teiles gemäß DIN ISO 2768 - mK					
Maß	bis 6	über 6 - bis 30	über 30 - bis 100	über 100 - bis 400	über 400 - bis 1000
Toleranz	± 0,1	± 0,2	± 0,3	± 0,5	± 0,8

Für nicht tolerierte Maße DIN 16 901 - 150



Artikelnummer	Werkstoff
030019	PBT GF30 hellgrau
030020	PBT GF30 dunkelgrau

Werkstoff	Maßstab		Zustand								
	Datum	Name	u	0550	110101	v. Zuehlern					
PBT GF30	gezeichnet	25.09.00	Yolk	a	0550	110101	v. Zuehlern				
Herstellung	GeK	26.09.00	Palomara	Aut. wiew	Antrag Nr.	Aut. Oct	GeK				
	AV	26.09.00	Jäger								
	FA										
	AV	26.09.01	Binder								
								Gehäuse für Teresa		Modell Nr. Ersatzl. Index u. Datum Zg. gl. Nr. v. 07.01.97	
								Art. Nr. s. Tabelle		Zeichnung Nr. A300.127.21	